



Allied Super Bar and Chain Oil

Specially formulated to provide exceptional protection to cutting chains and bars on chain saws and similar wear surfaces of other chain driven equipment.

Allied Super Bar and Chain Oil is manufactured with base oils and additives, which resists thinning out at high temperatures and excessive thickening at low temperatures. These base fluids have excellent demulsibility to repel water and prevent surface rust and corrosion.

It contains antiwear additives to help protect metal contact points from wear, along with a tackifier agent to reduce throw-off. This will improve its ability to remain on moving chains, protecting them from wear even at high speeds.

All Allied products are formulated to meet, or exceed, all relevant industry standards. The chart below highlights the key protection and performance features and benefits provided by our **Allied Super Bar and Chain Oil**.

FEATURES

Utilizes high VI, paraffinic base oils

Utilizes antiwear additives and tackifier agents

BENEFITS

- Resists high temperature thinning
- Resists excessive thickening at low temperatures
- Helps prevent surface rust and corrosion
- Superior protection against chain and bar wear
- Outstanding adhesion to chain and bar

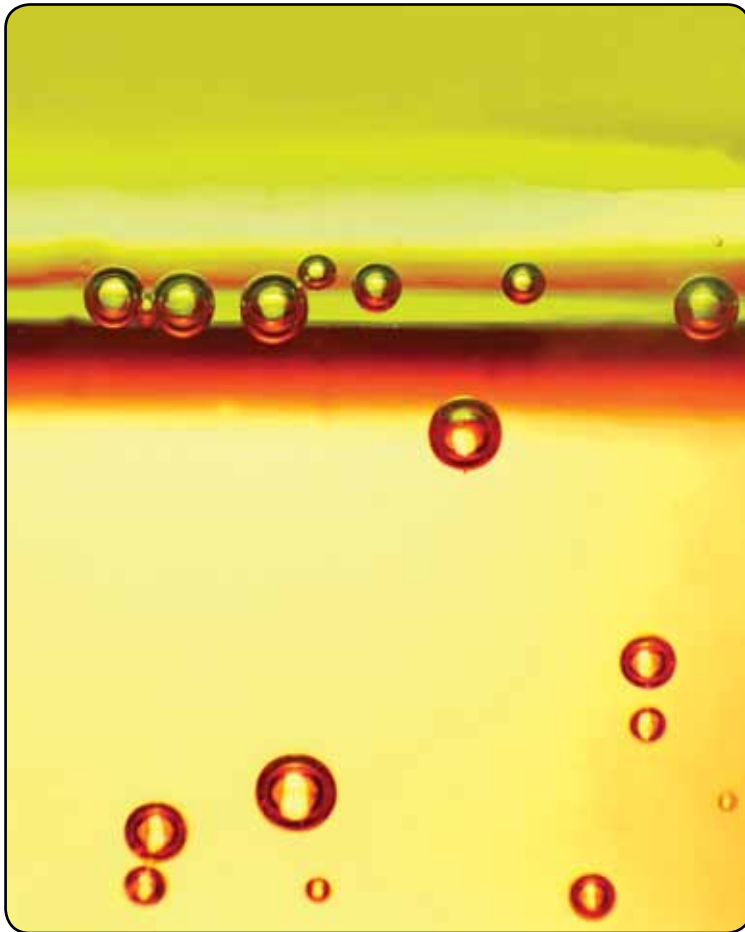


To find out more about our products and services, contact us at: (402) 344-4343 or visit www.alliedoil.com



Allied Super Bar and Chain Oil

Allied Super Bar and Chain Oil is recommended for use in all chain saw bar oiling systems and other moving chain systems where metal on metal wear is a problem and oil cling is important to protect equipment.



**ALWAYS CONSULT OWNERS MANUAL
FOR CORRECT VISCOSITY GRADE**

Due to our goal of continuous improvement and commitment to keep pace with changing requirements, the information contained in this product sheet is subject to formulation changes without notification. Check with your Allied sales representative to make sure you have the most up-to-date product sheet. The version to reference is located in the right hand corner of this product sheet.

Typical Properties:

PROPERTY	METHOD	Bar & Chain
Gravity, °API	ASTM D287	31.14
Specific Gravity @ 60°F (15.6°C)	ASTM D4052	0.87
Viscosity @ 40°C cSt	ASTM D445	96
Viscosity @ 100°C cSt	ASTM D445	11
Viscosity Index	ASTM D2270	99
Pour Point °C (°F)	ASTM D5950	-45°C (-49°F)
Color	ASTM D 1500	6

ALLIED OIL & TIRE COMPANY Branch Locations:

OMAHA, NE • 2209 S. 24th Street • (402) 344-4343
KANSAS CITY, MO • 5150 East Front Street • (816) 474-8040
DES MOINES, IA • 5201 N.E. 15th Street • (515) 262-9381
JOPLIN, MO • I-44 & Hwy 43 • (417) 623-4771
SIOUX FALLS, SD • I-90, Exit 402 • (605) 332-3352
WITCHITA, KS • 3619 North Poplar Street • (316) 616-6300